



University at Buffalo
The State University of New York
School of Public Health and Health Professions

POPULATION HEALTH OBSERVATORY



“Dedicated to improving health through population based research.”

GSEG DATA SUMMARY REPORT: 2007

January 21, 2008

In Collaboration with:
New York State Department of Health,
Bureau of Early Intervention

Acknowledgement

Primary Study Investigator

Adrienne Bryne
Department of Biostatistics

Contributors

Department of
Biostatistics

Randy Carter, Ph.D.
Li Yan, Ph.D.
Amy Barczykowski, MS

NYS DOH, Bureau of
Early Intervention

Donna Noyes, Ph.D.

University of Miami,
Department of Teaching
and Learning

Batya Elbaum, Ph.D.

Binghamton University,
Institute for Child
Development

Raymond Romanczyk,
Ph.D.

The GSEG Project

Frequency Report

The General Supervision Enhancement Grant Child and Family Outcomes Project (GSEG) was designed to determine the scope and description of the Structure of the New York State Early Intervention Program (NYSEIP). NYSEIP has developed evidenced- based clinical practiced guidelines in order to identify, asses, and intervene children with developmental problems between the ages of 0-3. The overall goal of the NYSEIP is to improve the quality of care for children with developmental delays.

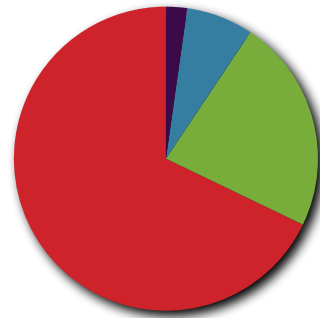
In July of 2007, a survey was sent out to 515 families that where exiting the program between May 1, 2007- August 31, 2007 located in Nassau County and Suffolk County. Of the 515 families only 230 responded, 113 from Nassau County and 116 from Suffolk. From this survey three important scores where determined which are the outcomes of interest. That is the Impact on Family Scale (IFS), Impact on Child Scale (ICS), and Family-Centered Services Scale (FCSS).

The goal of this report is to give a complete description of this sample. The statistics we will be examining are race, gender, medicaid eligibility, and length of treatment. More importantly we will describe how these variables compare to one another and to the outcomes of interests, i.e. IFS, ICS, and FCSS.

*Race

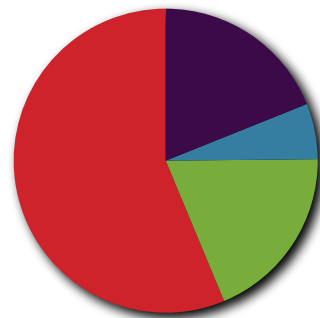
The frequency of race for the sample is

Race	Frequency	Percent
B	5	2.23
HP	16	7.14
O	51	22.77
W	152	67.86



Compared to the the average of Nassau and Suffolk Counties from the 2006 U.S. Census Bureau records. It appears that in the sample the African American population may be underrepresented and the Hispanic population may over-represented.

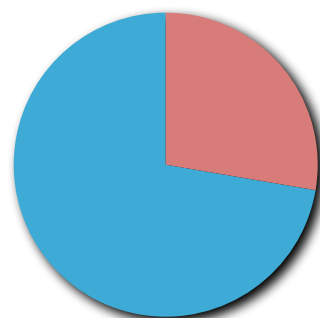
Race	Percent
B	9.55
HP	12.55
O	5.5
W	72.4



*Sex

The distribution of sex for the sample is:

Sex	Frequency	Percent
F	62	27.68
M	162	72.32

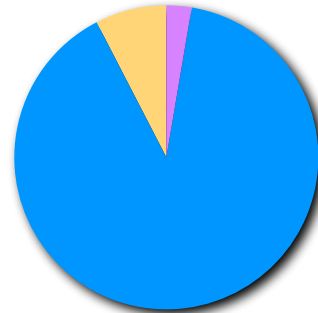


Females versus males in the general area is 51.1% and 48.9% respectively. It looks as if that our sample may not be accurately represented here. We are currently in the process of getting population estimates of children in the NYEIP program in Nassau and Suffolk counties.

***Medicaid**

The distribution of how many families have medicaid gives an idea of the proportion of families that are in a lower income bracket.

Medicaid	Frequency	Percent
Yes	17	7.59
No	201	89.73
Unknown	6	2.68



I believe that for the issue of medicaid, our sample is accurately represented. The 2006 Census showed that Nassau and Suffolk counties have an average of 6.6% of the population in poverty. Furthermore medicaid recipients are eligible for medicaid with incomes up to 250% of the poverty guidelines. So we should expect to see the percentage of medicaid holders higher than that of poverty in the area.

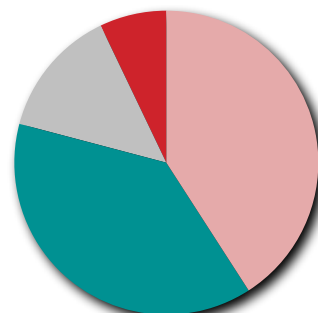
***Length of Treatment**

The initial variable for length of treatment (“lentreat”) was established in days. Converting this into years using the variable “duration”, we found that the length of treatment did not exceed four years.

Analysis Variable : duration		
Mean	Std Dev	Range
1.2460808	0.8162876	3.5564912

Breaking up duration in four time groups, 0 to 1 year, 1 to 2 years, 2 to 3 years, and 3 to four years, allows us to analyze the dispersion of length of treatment.

group	Frequency	Percent
0-1	92	40.89
1-2	86	38.22
2-3	31	13.78
3-4	16	7.11



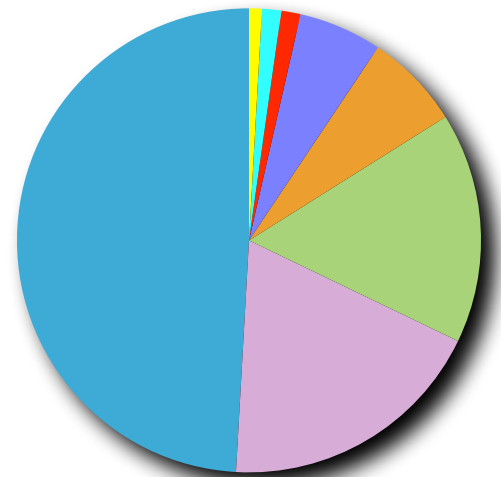
Comparisons

*Race and Sex with IFS, ICS, and FCSS Measures

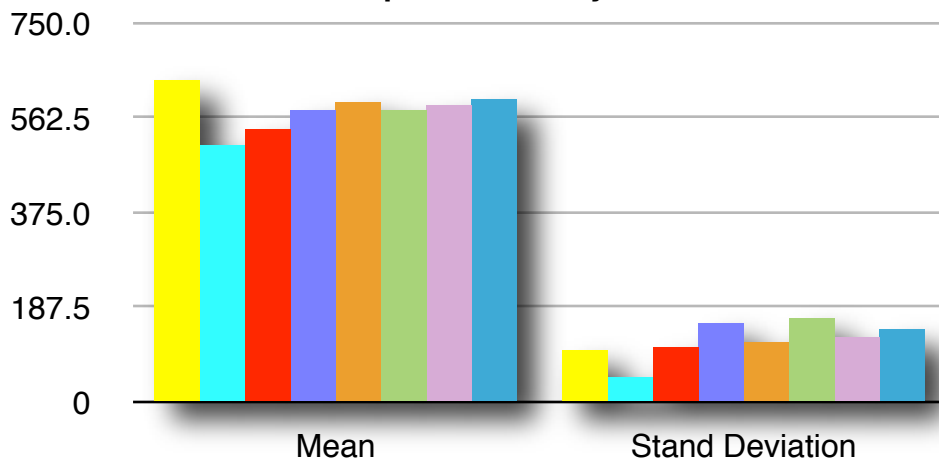
Race by Sex with IFS Measure

Race Sex		Frequency Count	Percent of Total Frequency	IFS Mean	IFS Standard Deviation
B	F	2.00	0.89	645.12	105.55
	M	3.00	1.34	513.02	53.75
HP	F	3.00	1.34	544.72	110.49
	M	13.00	5.80	579.04	156.69
O	F	15.00	6.70	599.47	122.39
	M	36.00	16.07	578.61	167.76
W	F	42.00	18.75	590.02	130.12
	M	110.00	49.11	602.45	149.90

Race by Sex



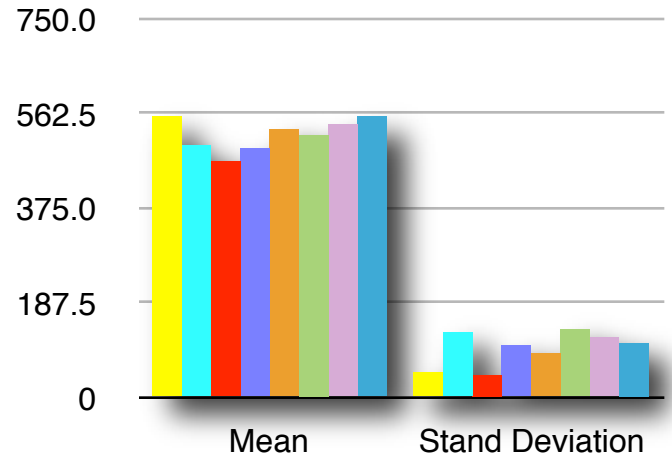
Impact on Family Scale



Race by Sex with ICS Measure

Race	Sex	Frequency Count	Percent of Total Frequency	ICS Mean	ICS Standard Deviation
B	F	2.00	0.89	562.20	54.24
	M	3.00	1.34	504.00	129.85
HP	F	3.00	1.34	467.57	49.19
	M	13.00	5.80	494.93	105.15
O	F	15.00	6.70	533.39	88.78
	M	36.00	16.07	525.46	138.60
W	F	42.00	18.75	544.72	123.11
	M	110.00	49.11	563.17	112.31

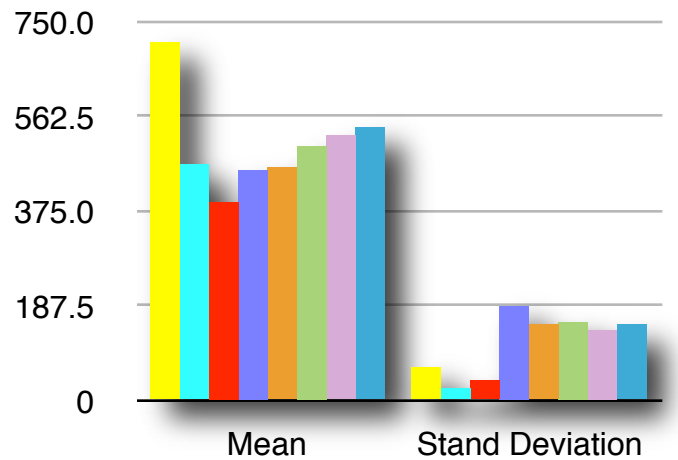
Impact on Child Scale



Race by Sex with FCSS Measure

Race	Sex	Frequency Count	Percent of Total Frequency	FCSS Mean	FCSS Standard Deviation
B	F	2.00	0.89	720.09	71.17
	M	3.00	1.34	470.77	27.08
HP	F	3.00	1.34	394.68	44.50
	M	13.00	5.80	461.89	187.92
O	F	15.00	6.70	462.83	152.82
	M	36.00	16.07	507.26	157.17
W	F	42.00	18.75	527.93	142.34
	M	110.00	49.11	542.65	155.31

Family Centered Services Scale

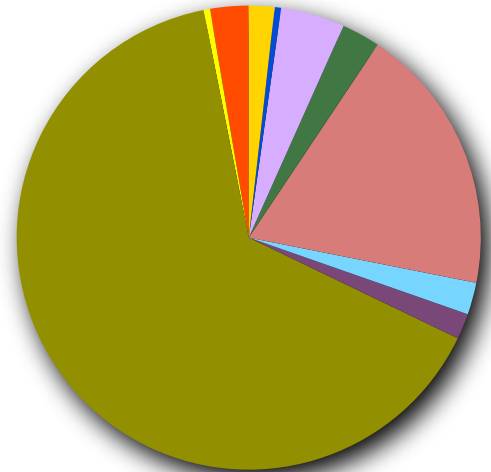


***Race by Medicaid with IFS, ICS, and FCSS Measures**

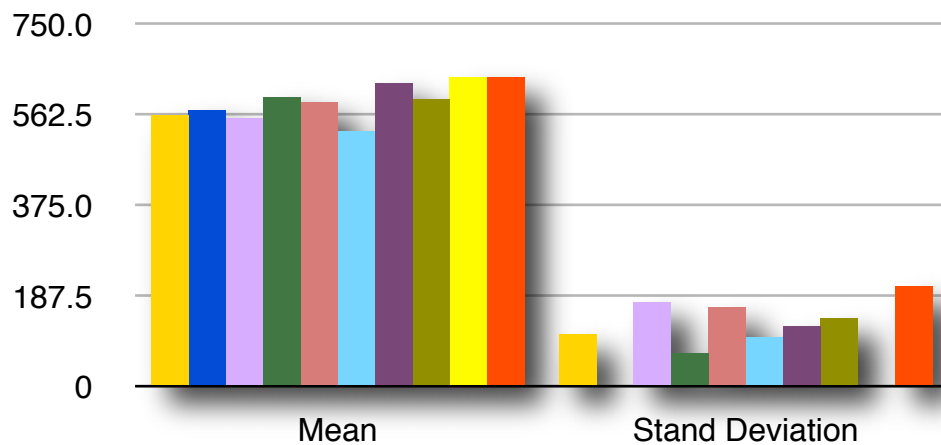
Race by Medicaid with IFS Measure

Race Medicaid		Frequency Count	Percent of Total Frequency	IFS Mean	IFS Standard Deviation
B	N	4.00	1.79	564.59	112.29
	Y	1.00	0.45	570.95	.
HP	N	10.00	4.46	554.58	178.65
	Y	6.00	2.68	602.65	72.10
O	N	42.00	18.75	587.53	162.76
	U	5.00	2.23	527.01	102.80
	Y	4.00	1.79	627.65	124.50
W	N	145.00	64.73	596.77	142.17
	U	1.00	0.45	642.92	.
	Y	6.00	2.68	645.88	210.59

Race by Medicaid



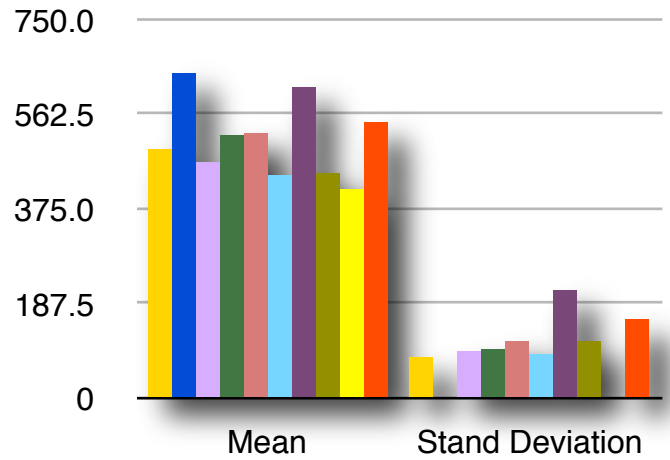
Impact on Family Scale



Race by Medicaid with ICS Measure

Race	Medicaid	Frequency Count	Percent of Total Frequency	ICS Mean	ICS Standard Deviation
B	N	4.00	1.79	496.47	85.13
	Y	1.00	0.45	650.53	.
HP	N	10.00	4.46	468.71	93.04
	Y	6.00	2.68	524.95	99.56
O	N	42.00	18.75	529.31	115.06
	U	5.00	2.23	443.35	88.74
	Y	4.00	1.79	617.39	216.94
W	N	145.00	64.73	559.51	113.69
	U	1.00	0.45	416.64	.
	Y	6.00	2.68	546.87	157.70

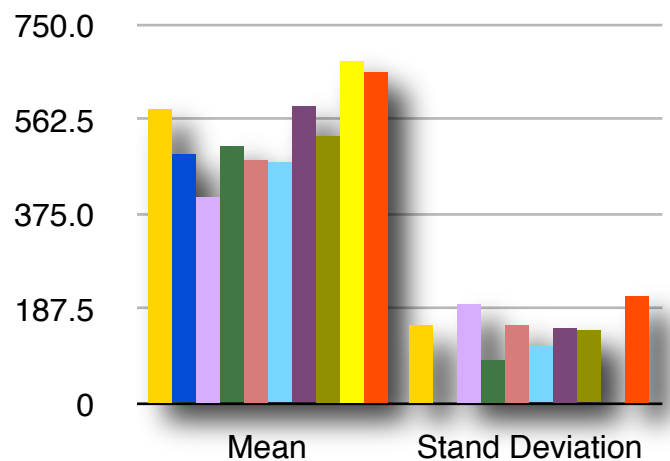
Impact on Child Scale



Race by Medicaid with FCSS Measure

Race	Medicaid	Frequency Count	Percent of Total Frequency	FCSS Mean	FCSS Standard Deviation
B	N	4.00	1.79	588.42	157.80
	Y	1.00	0.45	498.82	.
HP	N	10.00	4.46	411.66	199.76
	Y	6.00	2.68	512.01	91.46
O	N	42.00	18.75	486.31	159.84
	U	5.00	2.23	481.54	114.26
	Y	4.00	1.79	592.85	153.17
W	N	145.00	64.73	532.54	147.21
	U	1.00	0.45	680.59	.
	Y	6.00	2.68	660.96	214.68

Family Centered Services Scale

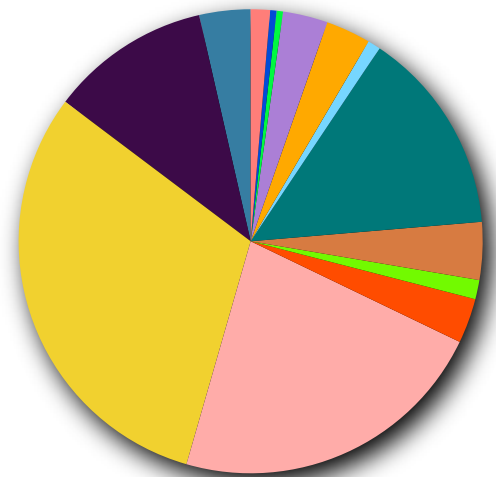


***Race by Length of Treatment**

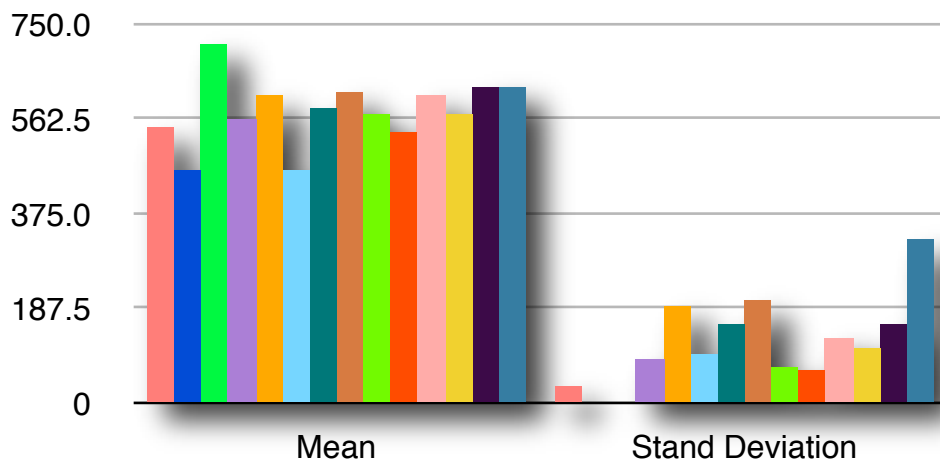
Race by Group with IFS Measure

Race group		Frequency Count	Percent of Total Frequency	IFS Mean	IFS Standard Deviation
B	0-1	3.00	1.34	548.26	38.89
	1-2	1.00	0.45	464.75	.
	2-3	1.00	0.45	719.75	.
HP	0-1	7.00	3.13	564.52	87.99
	1-2	7.00	3.13	611.76	196.10
	2-3	2.00	0.89	463.84	99.31
O	0-1	32.00	14.29	586.47	160.05
	1-2	9.00	4.02	619.27	206.39
	2-3	3.00	1.34	574.81	71.87
	3-4	7.00	3.13	536.72	66.85
W	0-1	50.00	22.32	610.08	132.16
	1-2	69.00	30.80	577.37	113.29
	2-3	25.00	11.16	626.58	159.85
	3-4	8.00	3.57	630.45	325.33

Race by Length of Treatment

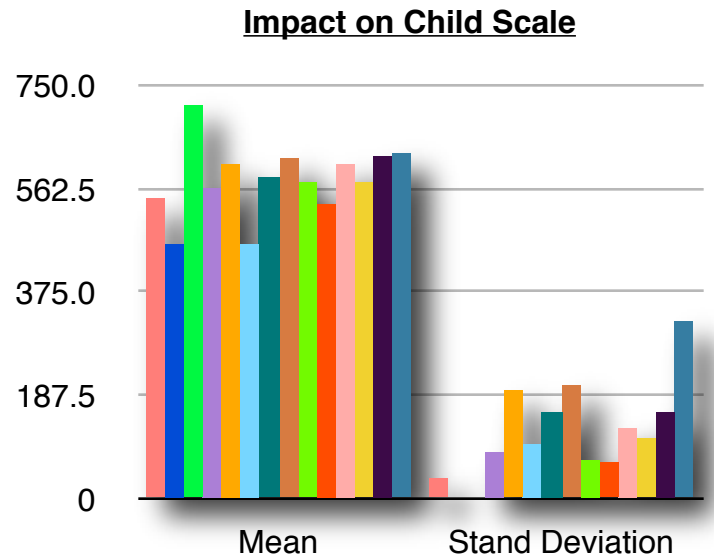


Impact on Family Scale



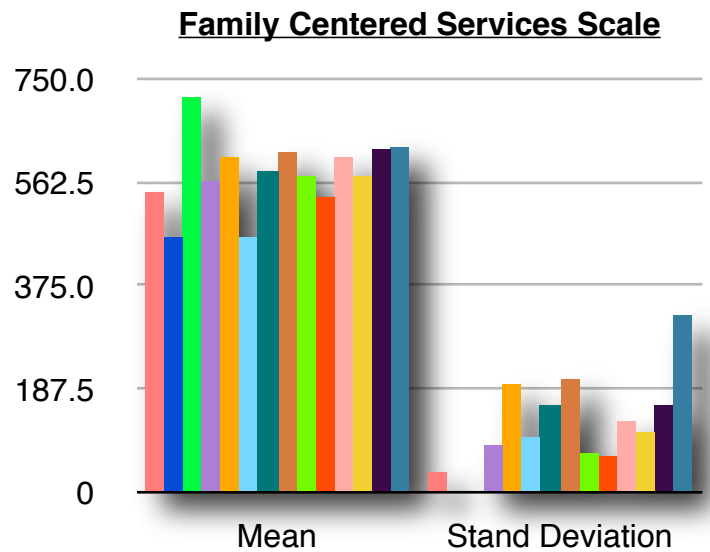
Race by Group with ICS Measure

Race group		Frequency Count	Percent of Total Frequency	ICS Mean	ICS Standard Deviation
B	0-1	3.00	1.34	544.22	97.73
	1-2	1.00	0.45	403.18	
	2-3	1.00	0.45	600.55	
HP	0-1	7.00	3.13	481.05	97.39
	1-2	7.00	3.13	515.10	99.89
	2-3	2.00	0.89	431.90	104.09
O	0-1	32.00	14.29	530.43	143.26
	1-2	9.00	4.02	547.22	109.73
	2-3	3.00	1.34	529.37	81.05
	3-4	7.00	3.13	490.11	63.41
W	0-1	50.00	22.32	556.92	115.83
	1-2	69.00	30.80	544.71	104.87
	2-3	25.00	11.16	568.08	116.31
	3-4	8.00	3.57	649.17	167.13



Race by Group with FCSS Measure

Race group		Frequency Count	Percent of Total Frequency	FCSS Mean	FCSS Standard Deviation
B	0-1	3.00	1.34	545.76	108.44
	1-2	1.00	0.45	444.78	
	2-3	1.00	0.45	770.42	
HP	0-1	7.00	3.13	481.00	66.79
	1-2	7.00	3.13	443.39	254.33
	2-3	2.00	0.89	358.92	15.37
O	0-1	32.00	14.29	488.06	176.96
	1-2	9.00	4.02	530.80	153.45
	2-3	3.00	1.34	474.16	82.72
	3-4	7.00	3.13	483.77	63.84
W	0-1	50.00	22.32	547.46	144.99
	1-2	69.00	30.80	498.17	127.34
	2-3	25.00	11.16	594.77	173.01
	3-4	8.00	3.57	656.07	210.20

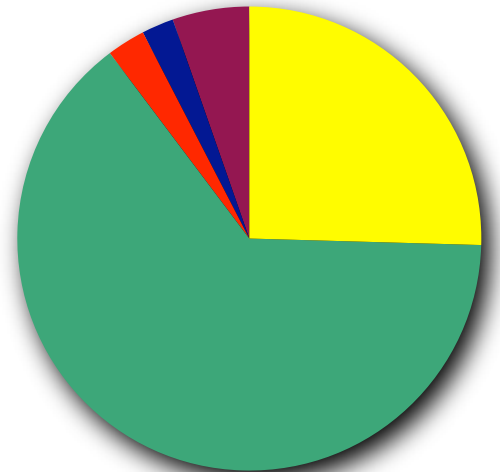


***Medicaid by Sex with IFS, ICS, and FCSS Measures**

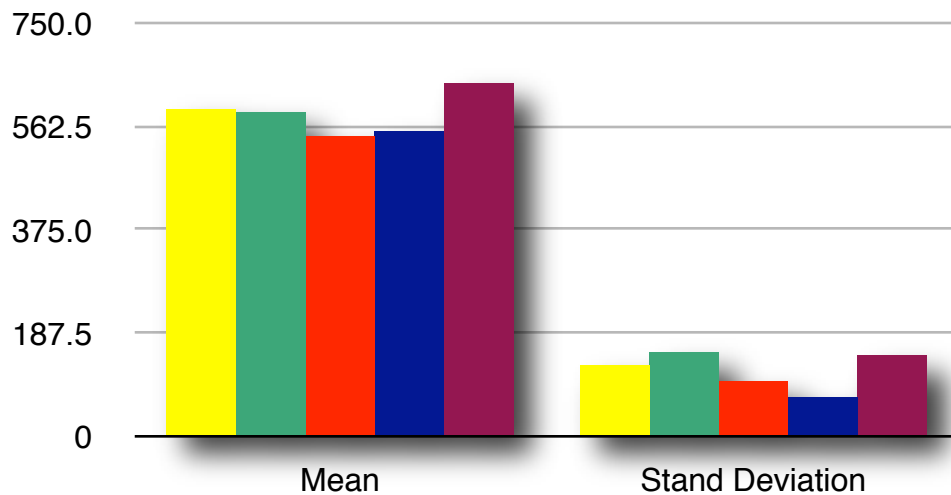
Medicaid by Sex with IFS Measure

		Frequency	Percent of Total Frequency	IFS Mean	IFS Standard Deviation
N	F	57.00	25.45	594.83	128.64
	M	144.00	64.29	591.02	154.55
U	M	6.00	2.68	546.33	103.41
Y	F	5.00	2.23	558.33	70.82
	M	12.00	5.36	648.42	151.94

Medicaid by Sex



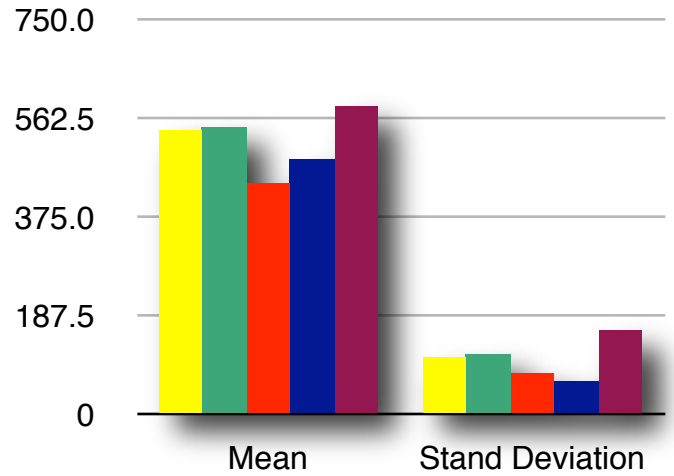
Impact on Family Scale



Medicaid by Sex with ICS Measure

Medicaid	Sex	Frequency Count	Percent of Total Frequency	ICS Mean	ICS Standard Deviation
N	F	57.00	25.45	543.48	113.68
	M	144.00	64.29	548.99	114.84
U	M	6.00	2.68	438.90	80.12
Y	F	5.00	2.23	485.56	68.25
	M	12.00	5.36	593.61	160.96

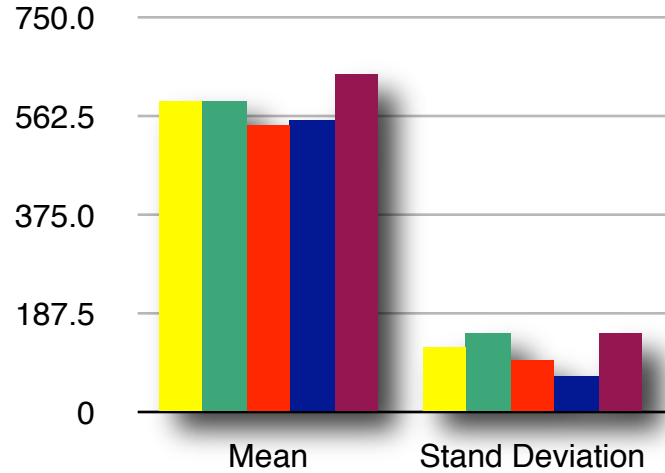
Impact on Child Scale



Medicaid by Sex with FCSS Measure

Medicaid	Sex	Frequency Count	Percent of Total Frequency	FCSS Mean	FCSS Standard Deviation
N	F	57.00	25.45	515.22	153.28
	M	144.00	64.29	519.07	156.26
U	M	6.00	2.68	514.71	130.57
Y	F	5.00	2.23	474.46	67.58
	M	12.00	5.36	627.98	169.32

Family Centered Services Scale

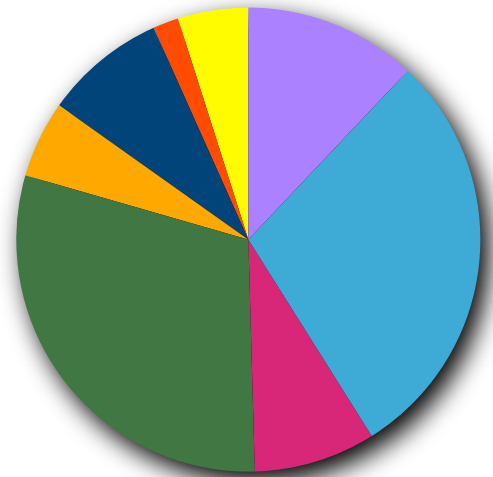


***Length of Treatment by Sex with IFS, ICS, and FCSS Measures**

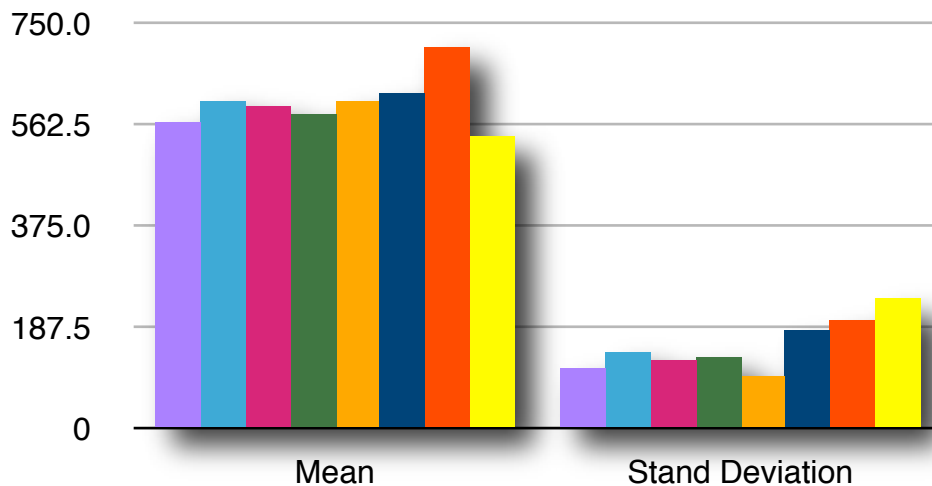
Length of Treatment by Sex with IFS Measure

group	Sex	Frequency Count	Percent of Total Frequency	IFS Mean	IFS Standard Deviation
0-1	F	27.00	12.05	566.21	115.66
	M	65.00	29.02	608.92	144.88
1-2	F	19.00	8.48	595.01	128.95
	M	67.00	29.91	579.91	133.45
2-3	F	12.00	5.36	605.33	98.56
	M	19.00	8.48	619.60	181.04
3-4	F	4.00	1.79	710.09	202.33
	M	11.00	4.91	541.84	243.85

Length of Treatment by Sex



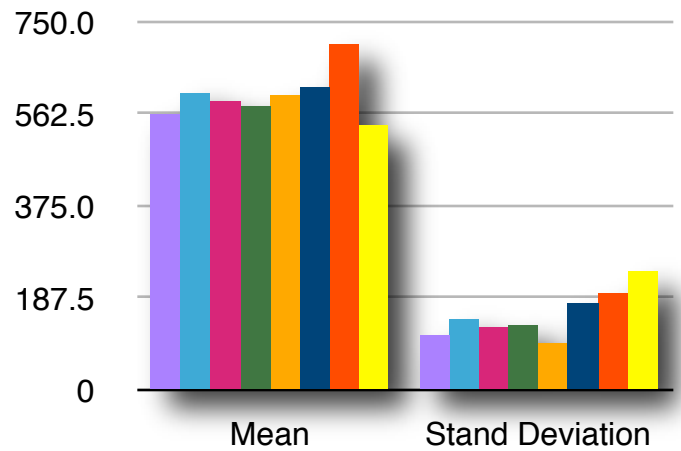
Impact on Family Scale



Length of Treatment by Sex with ICS Measure

group	Sex	Frequency Count	Percent of Total Frequency	ICS Mean	ICS Standard Deviation
0-1	F	27.00	12.05	514.92	86.76
	M	65.00	29.02	552.57	136.26
1-2	F	19.00	8.48	550.85	136.11
	M	67.00	29.91	538.10	94.80
2-3	F	12.00	5.36	535.18	81.69
	M	19.00	8.48	570.13	130.13
3-4	F	4.00	1.79	653.67	167.47
	M	11.00	4.91	546.31	140.05

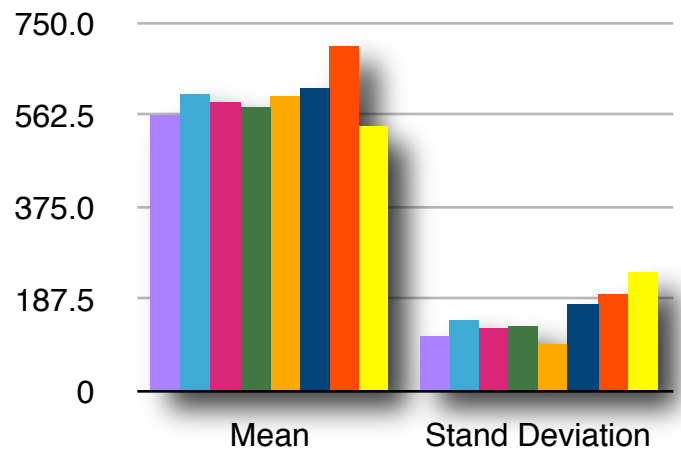
Impact on Child Scale



Length of Treatment by Sex with FCSS Measure

group	Sex	Frequency Count	Percent of Total Frequency	FCSS Mean	FCSS Standard Deviation
0-1	F	27.00	12.05	468.36	137.39
	M	65.00	29.02	543.84	154.84
1-2	F	19.00	8.48	523.98	123.53
	M	67.00	29.91	488.71	146.64
2-3	F	12.00	5.36	549.52	178.76
	M	19.00	8.48	588.73	173.41
3-4	F	4.00	1.79	636.04	175.12
	M	11.00	4.91	553.71	182.40

Family Centered Services Scale

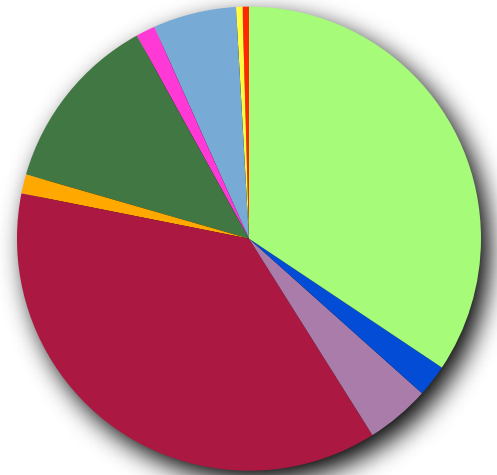


***Length of Treatment by Medicaid with IFS, ICS, and FCSS Measures**

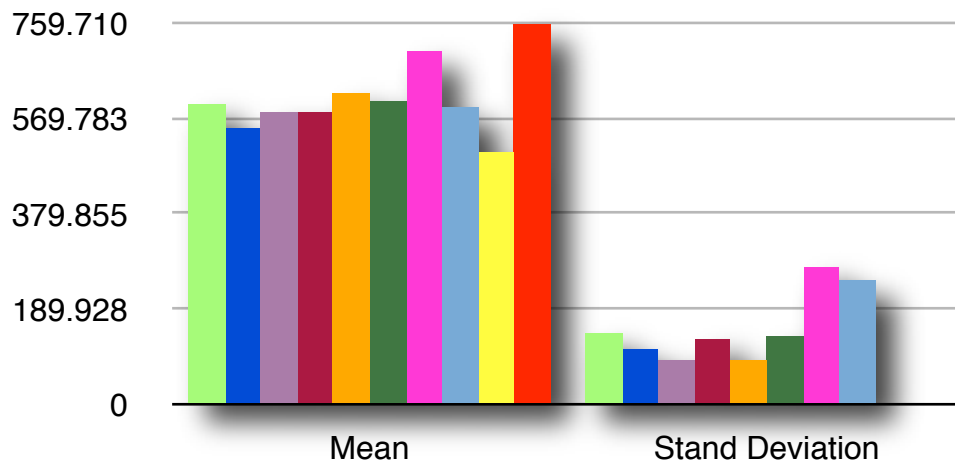
Length of Treatment by Medicaid with IFS Measure

group	Medicaid	Frequency Count	Percent of Total Frequency	IFS Mean	IFS Standard Deviation
0-1	N	77.00	34.38	600.92	144.40
	U	5.00	2.23	554.19	113.60
	Y	10.00	4.46	582.59	92.75
1-2	N	83.00	37.05	581.81	133.32
	Y	3.00	1.34	622.93	88.65
2-3	N	28.00	12.50	604.21	138.29
	Y	3.00	1.34	706.12	277.28
3-4	N	13.00	5.80	579.53	252.24
	U	1.00	0.45	507.06	.
	Y	1.00	0.45	759.71	.

Length of Treatment by Medicaid

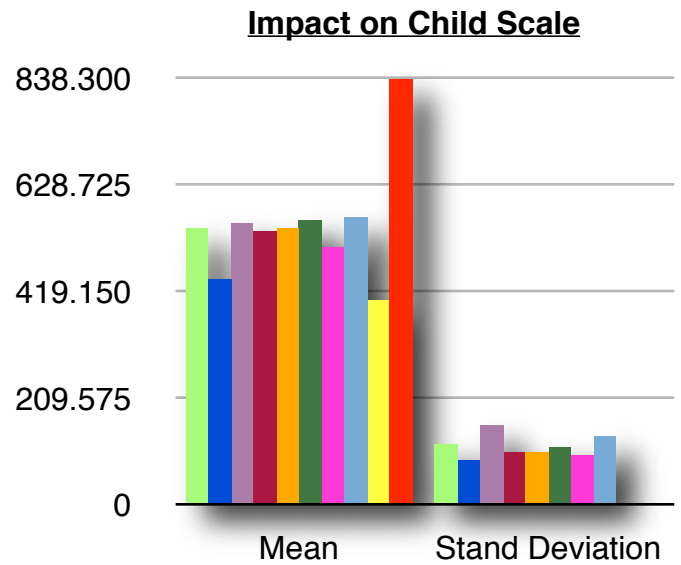


Impact on Family Services



Length of Treatment by Medicaid with ICS Measure

group	Medicaid	Frequency Count	Percent of Total Frequency	ICS Mean	ICS Standard Deviation
0-1	N	77.00	34.38	545.93	121.16
	U	5.00	2.23	446.10	87.37
	Y	10.00	4.46	555.27	154.89
1-2	N	83.00	37.05	540.71	105.12
	Y	3.00	1.34	546.62	106.85
2-3	N	28.00	12.50	561.94	115.39
	Y	3.00	1.34	506.73	98.49
3-4	N	13.00	5.80	567.92	133.69
	U	1.00	0.45	402.85	.
	Y	1.00	0.45	838.30	.



Length of Treatment by Medicaid with FCSS Measure

group	Medicaid	Frequency Count	Percent of Total Frequency	FCSS Mean	FCSS Standard Deviation
0-1	N	77.00	34.38	521.41	159.65
	U	5.00	2.23	523.91	143.79
	Y	10.00	4.46	522.67	112.55
1-2	N	83.00	37.05	494.43	143.05
	Y	3.00	1.34	553.91	109.83
2-3	N	28.00	12.50	557.33	162.99
	Y	3.00	1.34	724.93	235.33
3-4	N	13.00	5.80	563.19	172.88
	U	1.00	0.45	468.70	.
	Y	1.00	0.45	844.83	.

